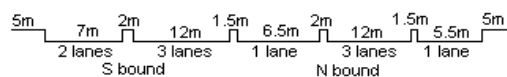


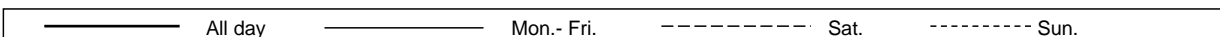
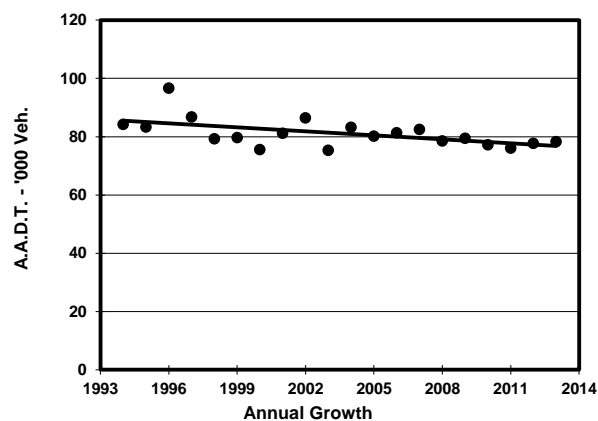
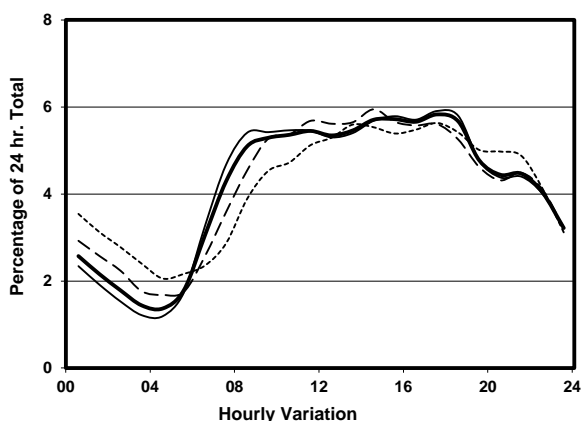
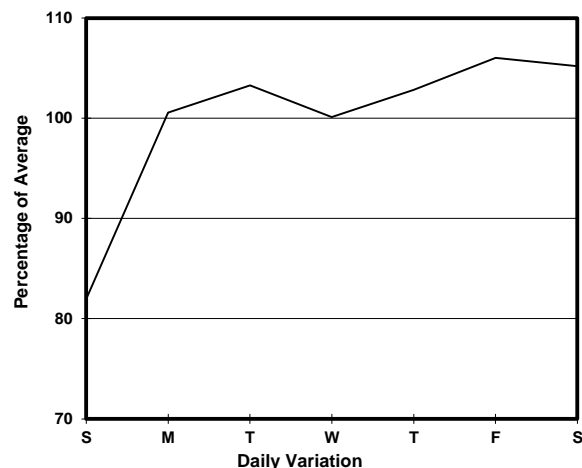
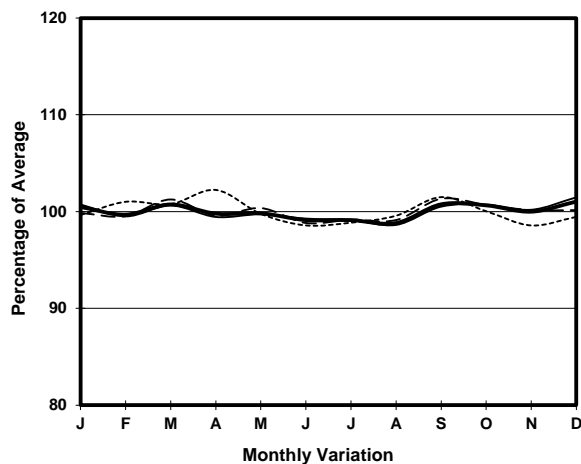
YEAR 2013

LINK FERRY ST & FERRY ST <FO> (from WATERLOO RD to SHANTUNG ST)

COVERAGE (B) STATION 4214  
ROAD NETWORK MAJOR  
ROAD TYPE PRIMARY DISTRIBUTOR



## 1. TRAFFIC FLOW VARIATION AND GROWTH



## 2. TRAFFIC CHARACTERISTICS (BY DIRECTION)

Parameter	All - Day	Mon. - Fri.	Sat.	Sun.
<b>SOUTH BOUND</b>				
A.A.D.T.	41500	43130	44080	33640
R 12 / 24 - %	64.3	65.4	63.8	58.6
R 16 / 24 - %	81.7	82.7	80.6	76.7
AM Peak Hour	0900-1000	0900-1000	0900-1000	0900-1000
One-way flow at AM peak hour	2290	2450	2430	1510
T - % (AM)	-	3.8	-	-
PM Peak Hour	1800-1900	1800-1900	1700-1800	1800-1900
One-way flow at PM peak hour	2410	2550	2420	1930
T - % (PM)	-	3.1	-	-
Prop.of commercial vehicles - 16 hr.	-	5.3	-	-
<b>NORTH BOUND</b>				
A.A.D.T.	36790	37950	39020	31190
R 12 / 24 - %	65.5	66.8	63.7	60.4
R 16 / 24 - %	83.7	84.6	82	80.4
AM Peak Hour	0900-1000	0700-0800	0900-1000	0900-1000
One-way flow at AM peak hour	1850	2000	1950	1430
T - % (AM)	-	12.6	-	-
PM Peak Hour	1700-1800	1700-1800	1600-1700	1600-1700
One-way flow at PM peak hour	2240	2360	2260	1830
T - % (PM)	-	7.1	-	-
Prop.of commercial vehicles - 16 hr.	-	6.8	-	-

## 3. OTHER INFORMATION AND COMMENT

**4. Vehicle classification and occupancy - Monday to Friday**

Time		Class of vehicle									
		Motor Cycle	Private Car	Taxi	Private LB	PLB	Goods veh.		Non Fr. Bus	Fr. Bus	
							Light	M & H		SD	DD
0700-0800	Pro	5.1	24.2	22.3	1.4	6.7	27.3	6.9	5.1	0.0	1.0
	Ocp	1.0	1.3	2.0	5.1	14.0	1.4	1.2	13.8	0.0	3.1
0800-0900	Pro	5.0	35.6	21.1	1.0	6.3	24.1	3.9	2.7	0.0	0.5
	Ocp	1.1	1.3	2.1	3.5	11.7	1.6	1.5	16.3	0.0	7.0
0900-1000	Pro	3.1	31.7	21.7	1.2	4.6	31.9	3.3	1.9	0.0	0.6
	Ocp	1.1	1.3	2.0	2.1	10.4	1.5	1.3	14.2	0.0	1.0
1000-1100	Pro	4.7	26.3	19.4	0.8	3.9	39.1	4.7	0.9	0.0	0.3
	Ocp	1.1	1.3	2.0	1.4	7.9	1.4	1.4	7.0	0.0	1.0
1100-1200	Pro	3.4	28.7	18.1	1.2	3.4	40.6	3.5	0.9	0.0	0.3
	Ocp	1.0	1.2	2.1	2.0	7.4	1.4	1.4	8.6	0.0	1.0
1200-1300	Pro	4.1	30.6	19.7	0.4	2.1	35.8	5.4	1.7	0.0	0.3
	Ocp	1.0	1.4	2.2	2.0	8.0	1.5	1.5	7.6	0.0	1.0
1300-1400	Pro	3.5	30.4	19.4	0.6	2.7	37.7	4.6	0.9	0.0	0.2
	Ocp	1.0	1.5	2.3	3.0	9.5	1.4	1.4	6.9	0.0	1.0
1400-1500	Pro	2.9	30.3	17.3	1.4	2.9	39.5	4.2	1.3	0.0	0.3
	Ocp	1.0	1.3	2.5	1.7	8.5	1.5	1.6	6.8	0.0	1.0
1500-1600	Pro	2.9	33.8	17.8	0.8	2.4	37.3	3.6	1.2	0.0	0.1
	Ocp	1.0	1.4	2.3	5.5	8.0	1.4	1.4	10.3	0.0	1.0
1600-1700	Pro	3.1	36.4	21.0	1.1	2.2	30.3	3.9	1.6	0.0	0.5
	Ocp	1.1	1.4	2.2	2.4	13.5	1.5	1.3	12.1	0.0	1.0
1700-1800 Peak hour	Pro	4.8	39.4	19.5	0.9	3.8	26.1	2.9	1.7	0.0	0.9
	Ocp	1.0	1.5	2.1	3.3	12.2	1.6	1.6	8.4	0.0	1.0
1800-1900	Pro	4.2	50.2	19.6	0.8	5.0	16.6	1.7	1.4	0.0	0.6
	Ocp	1.0	1.5	2.3	2.8	16.2	1.5	1.3	8.9	0.0	1.0
1900-2000	Pro	4.9	44.6	26.1	0.4	6.0	12.7	2.5	2.1	0.0	0.7
	Ocp	1.0	1.3	2.3	1.0	13.7	1.6	1.2	7.5	0.0	1.0
2000-2100	Pro	3.5	42.1	32.2	0.2	6.3	10.0	2.6	2.0	0.0	1.0
	Ocp	1.2	1.4	2.1	1.5	11.7	1.4	1.2	10.1	0.0	1.0
2100-2200	Pro	2.2	39.5	34.3	0.4	6.8	9.4	2.8	3.5	0.0	1.2
	Ocp	1.0	1.4	2.1	1.7	10.7	1.6	1.6	10.8	0.0	1.0
2200-2300	Pro	2.2	39.7	36.8	0.4	8.9	6.5	3.2	1.3	0.0	1.0
	Ocp	1.3	1.3	2.1	3.0	10.5	1.5	1.6	3.3	0.0	1.0
16 hours	Pro	3.7	35.3	22.5	0.8	4.5	27.1	3.7	1.8	0.0	0.6
	Ocp	1.1	1.4	2.2	2.7	11.3	1.5	1.4	10.5	0.0	1.5

**Legend**

**Pro.** Proportion of vehicles in % (Sum may not add up to 100% due to figure rounding)  
**Ocp.** Average occupancy of vehicles  
**M&H** Medium and Heavy